

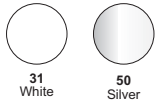


- Surface or track mounted adjustable metal halide spotlights for mains voltage
- Body and bracket made in aluminium
- Use with single ended MH lamps, and CDM-R MH lamps
- Comes complete with ceiling bracket
- Adaptors required for track mounting (see accessories)
- The barn door is sold separately and is easy to install (fig.1)
- Twist off system for easy lamp maintenance (fig. 2)
- Can be installed on normally flammable surfaces
- Class 1
- IP 20

Fig. 1 - Barn door installation

Fig. 2 - Lamp maintenance





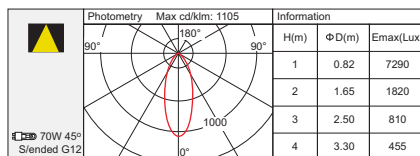
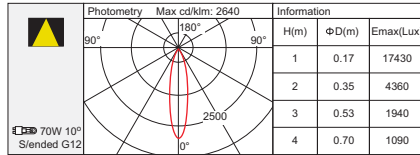
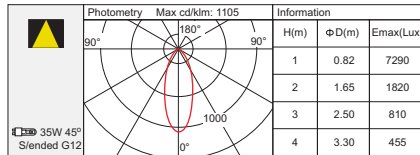
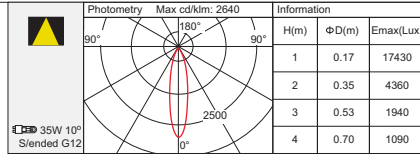
code lamp details

35W Surface mount
10° Reflector
4116.35.10 35W 230V G12
45° Reflector
4116.35.45 35W 230V G12

Includes integral control gear

35W Track mount
10° Reflector
4116.35.10T 35W 230V G12
45° Reflector
4116.35.45T 35W 230V G12

Includes integral control gear and track adaptors



70W Surface mount
10° Reflector
4116.10 35W 230V G12
45° Reflector
4116.45 35W 230V G12

Includes integral control gear

70W Track mount
10° Reflector
4116.10T 70W 230V G12
45° Reflector
4116.45T 70W 230V G12

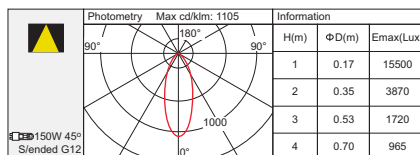
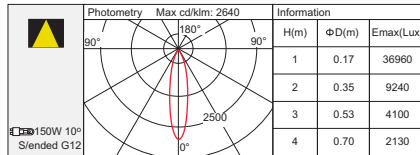
Includes integral control gear and track adaptors

150W Surface mount
10° Reflector
4117.10 150W 230V G12
45° Reflector
4117.45 150W 230V G12

Includes integral control gear

150W Track mount
10° Reflector
4117.10T 150W 230V G12
45° Reflector
4117.45T 150W 230V G12

Includes integral control gear and track adaptors

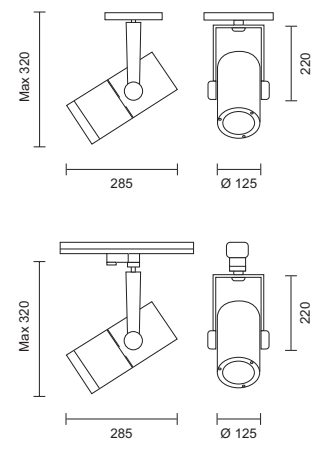
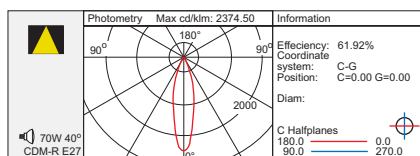
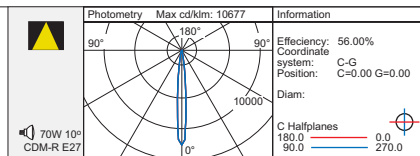


code lamp details

70W CDM-R MH spot
4118 70W 230V E27

35W version available on request

Includes integral control gear and track adaptors



Accessories



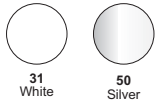
code details

Barndoors
4119.30 black
4119.31 white
4119.50 silver



code details

Utilises both 3 phase and single phase track
(See track page for details)



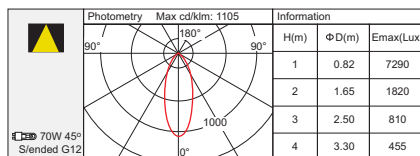
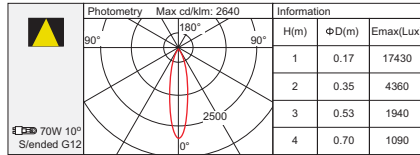
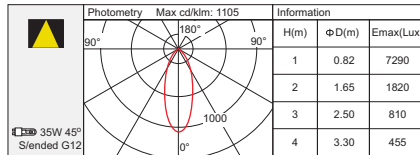
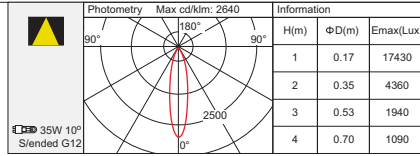
code lamp details

35W Surface mount
10° Reflector
4116.35.10 35W 230V G12
45° Reflector
4116.35.45 35W 230V G12

Includes integral control gear

35W Track mount
10° Reflector
4116.35.10T 35W 230V G12
45° Reflector
4116.35.45T 35W 230V G12

Includes integral control gear and track adaptors



70W Surface mount
10° Reflector
4116.10 35W 230V G12
45° Reflector
4116.45 35W 230V G12

Includes integral control gear

70W Track mount
10° Reflector
4116.10T 70W 230V G12
45° Reflector
4116.45T 70W 230V G12

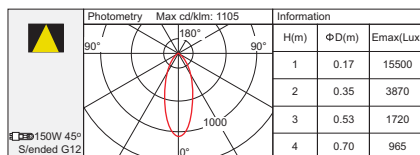
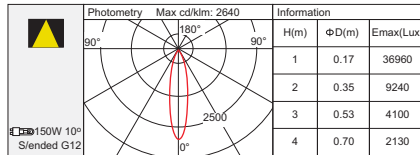
Includes integral control gear and track adaptors

150W Surface mount
10° Reflector
4117.10 150W 230V G12
45° Reflector
4117.45 150W 230V G12

Includes integral control gear

150W Track mount
10° Reflector
4117.10T 150W 230V G12
45° Reflector
4117.45T 150W 230V G12

Includes integral control gear and track adaptors

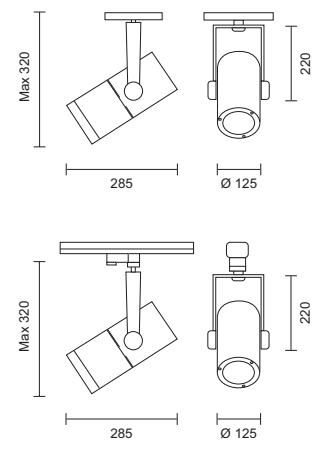
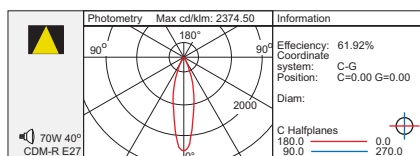
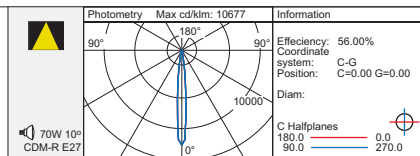


code lamp details

70W CDM-R MH spot
4118 70W 230V E27

35W version available on request

Includes integral control gear and track adaptors



Accessories



code details

Barndoors
4119.30 black
4119.31 white
4119.50 silver



code details

Utilises both 3 phase and single phase track
(See track page for details)