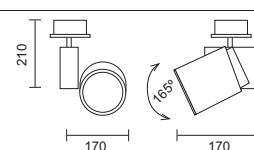
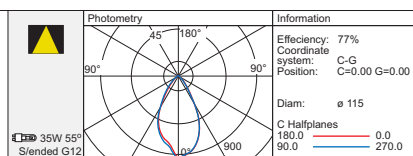




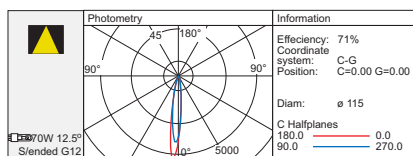
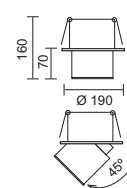
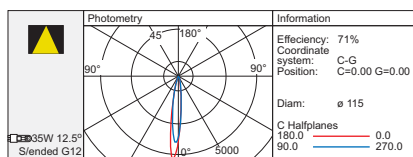
- Surface or recessed spotlight
- Body and base made in die-cast aluminium
- Utilises either 35W or 70W single ended MH lamps
- The fittings come complete with a 55° reflector with a narrow 12.5° option available as an accessory
- The recessed spot can tilt up to 45° with the surface spot tilting up to 165°
- Includes electronic control gear
- Can be installed on normally flammable surfaces
- Class 1
- IP 20



code lamp details
Surface spot with 55° reflector
4127.1.35.55 35W 230V G12
4127.1.70.55 70W 230V G12
 Includes electronic control gear



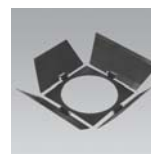
Recessed spot with 55° reflector
4127.2.35.55 35W 230V G12
4127.2.70.55 70W 230V G12
 Includes electronic control gear



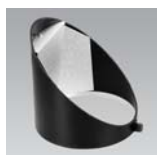
Accessories



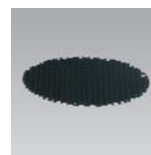
code details
12.5° Reflector
4127.12R



code details
Barn door
4127.BD



code details
Cowl
4127.CO



code details
Honeycomb grill
4127.HC